



Circuit Technology

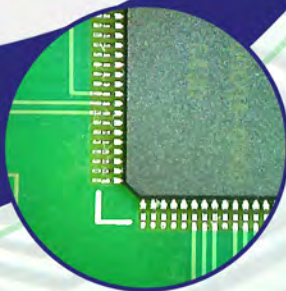
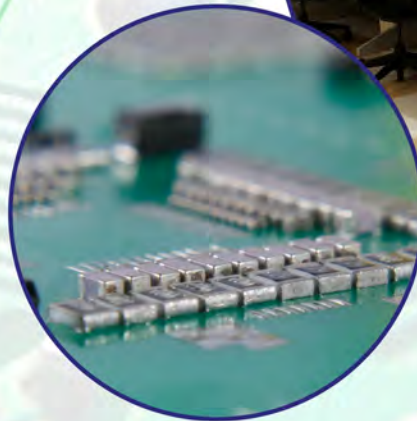
The Solder Training Authority.

IPC CERTIFIED SOLDER TRAINING

CTI SOLDER TRAINING CLASSES

CUSTOM COURSES

SINCE 1994



(919) 552-3434 www.circuittechnology.com

RALEIGH, NC | BALTIMORE, MD | MELBOURNE, FL | CLEARWATER, FL | ALAJUELA, COSTA RICA

THE CTI DIFFERENCE

The techniques we teach in the classroom are aimed at making your job easier.

Each of our IPC Master Trainers provide over 20 years of industry experience and know-how. This makes a big difference in the classroom environment where they take the extra time to relate the material to real world applications. Every training course comes complete with the latest soldering equipment and supplies used in today's industry. Our trainers are always informed about IPC revisions changes and the latest industry news. We use this knowledge to pass the benefits of quality information onto our students.

WHAT WE DELIVER




CTI offers IPC certifications as well as CTI and Weller courses by trained professionals and the latest industry standards.

Our classes offer certifications for registered instructor and specialists in-IPC-A-610, IPC/WHMA-620-A, IPC J-STD-001 and IPC 7711/7721. In addition, we are authorized by Weller to offer any of the Weller certifications. Our popular SMT Bootcamp course covers the basics of the circuit board assembly process and is tailored to meet your specific needs. CTI also offers specific classes in LED assembly/repair, lead-free, wave soldering and reflow or we will customize courses for your specifications. In addition, we offer consulting services in all areas of the electronic assembly, repair, rework, and modification processes.

HOW WE DELIVER

Our custom designed solder training courses can be done at any one of our facilities or at your location to meet your specific requirements.

Our headquarters in Raleigh, NC as well as our locations in Maryland, Costa Rica and Florida offers customers a professional state-of-the-art training center. Our lab setting and environment can be set up remotely and brought to your facility to train your personnel. This eliminates time, travel issues and associated costs which can be a burden to students.



Thank you for an outstanding training session this week. I have heard nothing but positive comments on the training and your ability to keep them interested and engaged."

- Brandon
3 Phoenix, Inc

IPC TRAINING CLASSES



REWORK & REPAIR **IPC 7711/7721**

Rework is defined as the act of reprocessing non-complying articles, through the use of original or equivalent processing, in a manner that assures full compliance of the article with applicable drawings or specifications. Probably 90% of the post assembly soldering processes fall into this category.



INSPECTION CRITERIA **IPC 610**

This IPC 610 Certified IPC Specialist (CIS) training course will provide the students with the industry approved inspection criteria for all the assemblies commonly encountered in a electronic assembly environment.



SOLDERING PROCESS **JSTD**

This is a comprehensive, hands-on solder training program based on J-STD-001. The program describes materials, methods and verification criteria for producing high quality soldered interconnections.



WIRE HARNESS ASSEMBLY INSPECTION CRITERIA **IPC 620**

IPC/WHMA-A-620 is the first industry standard for cable and wire harness fabrication and installation.



ACCEPTABILITY OF PRINTED BOARDS **IPC 600**

The IPC-A-600 Training and Certification Program helps all segments of the electronics interconnection industry improve their understanding of printed board quality issues.

COMBINATION CLASSES

We combine our IPC course offerings to bring together an all-encompassing and thorough educational experience with the following class groupings: IPC 610 and JSTD and IPC JSTD, 7711 and CIS.

Circuit Technology by far surpasses them all! They have expert Instructors, unlimited resources for training material, and best of all, their recent investment in new training equipment and a new training facility exceeds the standards, placing them above everyone else."

- Troy S.
Keltech, Inc.

CTI TRAINING CLASSES



SMT REWORK

Lead free alloys characteristics are discussed and the differences and similarities explored. The student will become familiar with the IPC component identification desk reference manuals and workmanship standards as they pertain to SMT technology.



COMBOTECH MIXED SMT AND PTH

This is a comprehensive hands-on course designed for the beginner to intermediate level solderer. It will instruct the student on protection of electronic circuitry from the hazards of ESD, basic component identification, and workmanship standards.



SMT BOOTCAMP

This class is designed to introduce the student to the basics of automated PCB assembly and processing. The student will be given an overview of the equipment used and the parameters affecting final product quality.



APPLICATION-SPECIFIC CLASSES

We can cover a wide variety of techniques including, but not limited to: Wave Solder and Reflow Solder Process, ESD, Component ID, Combotech Rework, Medical Device Assembly and more!



ADVANCED SMT 3-DAY

This is a three-day course designed to refine the student's skills in the installation and removal of complex surface mount assemblies.



WELLER

This is an introduction to using Weller tools for basic soldering techniques, TH technology, wires and terminals, SMT, BGA and inspection.



LEAD-FREE SOLDERING

This three day course is designed to focus primarily on lead-free soldering techniques as applied to TH technology, SMT and inspection.



ONLINE TRAINING

This form of online learning is perfect for the student that has their own equipment and a flexible schedule.

"I would have to say the overall format of the presentation was the main strength of the course. The layout of the theory, seeing it performed by the instructor, and the hands-on was most educational."

- James W.

CUSTOM CLASSES

We work with you to customize classes specific to your process. This facilitates maximum benefit with the least cost and least training time.